

DUNCAN, Laurie Matthew: *Elegy*

[DUNCAN, Laurie Matthew](#) (b. 1956) – M – Region: Manitoba (B); Thailand (R).

Elegy (2011) For trombone and piano. Duration: 7:10.

Availability: [Pine Grove Music](#) PG-11, © 2012 (CMC Call #: MI 6213 D9115el).

Copy Quality: computer.

Level of Difficulty: 4.

Notation: standard.

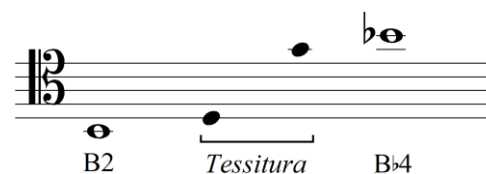
Special Techniques: grace notes.

Equipment/Mutes: cup mute (throughout).

Overview:

Tempo	Meter	Rhythms
♩ = 66, ♩ = 69, ♩ = 72	4/4	8 th

Range / Clefs / Tessitura:



Technical Characteristics: This lyrical work features the warm singing sound of the trombone. The many soft entries, especially in the high register, require the utmost delicacy of articulations and fine breath control (see Figure 1). Rhythmically straightforward, the coordination of the trombone and piano parts is not difficult once a few cues are established.

Figure 1. Duncan: *Elegy*, measures 60-65.



Musical Characteristics: With its slow pace and soft dynamic range (from *pp* to *mf*), this work imparts a feeling of stillness and brooding melancholy. The cantabile trombone, cup-muted throughout, floats over thick harmonies in the piano, and would be enhanced by a warm, clear sound with a gentle vibrato.

Pedagogical/Performance Value: This is a beautiful work that makes an appealing recital piece, especially if one needs a soft lyrical work for contrast. *Elegy* would also serve well as a pedagogical tool for the development of soft articulations and dynamic control.

Supplementary Information:

Dedication: Dedicated to Keith Jones.

Premiere: August 3, 2011, The Kirk of St. James, Charlottetown, PEI; Dale Sorensen, trombone; Frances McBurnie, piano.

Score Sample: The entire score can be downloaded from the [CMC](#).